



Installing Enterprise Tester on a Windows 7 Operating System

Introduction

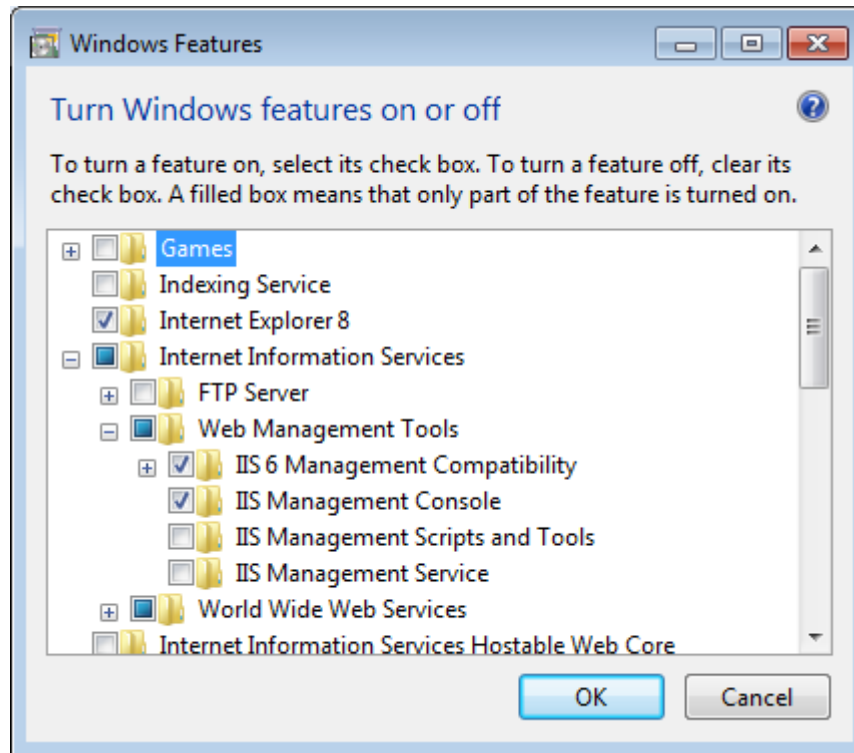
When installing Enterprise Tester on a Windows 7 Operating System, some additional configurations for IIS and the application pool may be required. For 32 bit operating systems, Enterprise Tester will automatically install a SQL Server Express database. For 64 bit operating systems, users will need to install their SQL Server Express database. This mini- guide outlines the settings to check and how to install your database (if required).

Review and Configure Window Features

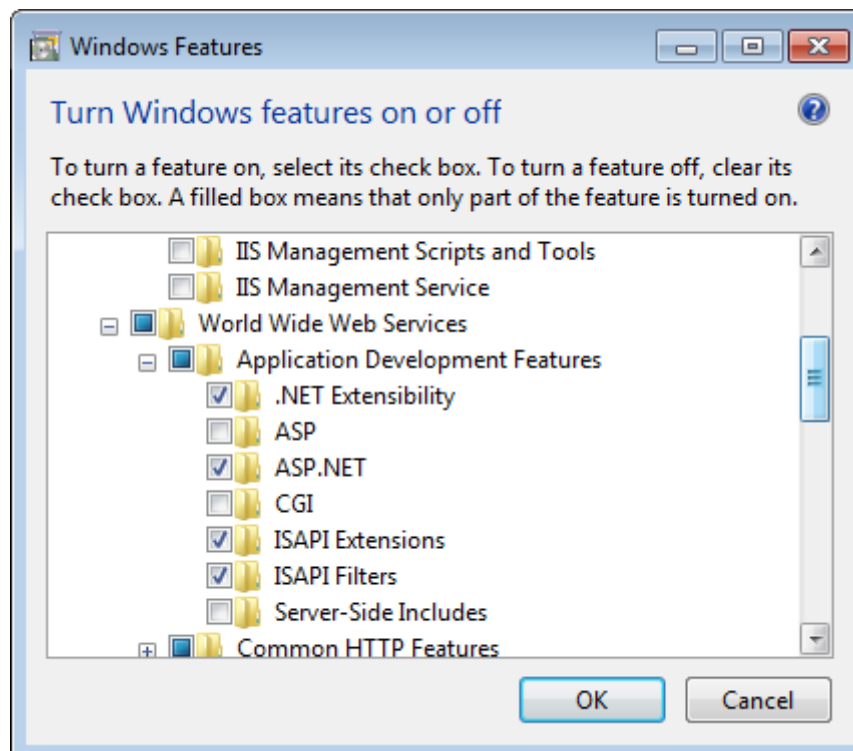
Go to Control Panel>Programs> Turn Windows Features On and Off.

Expand Internet Information Services.

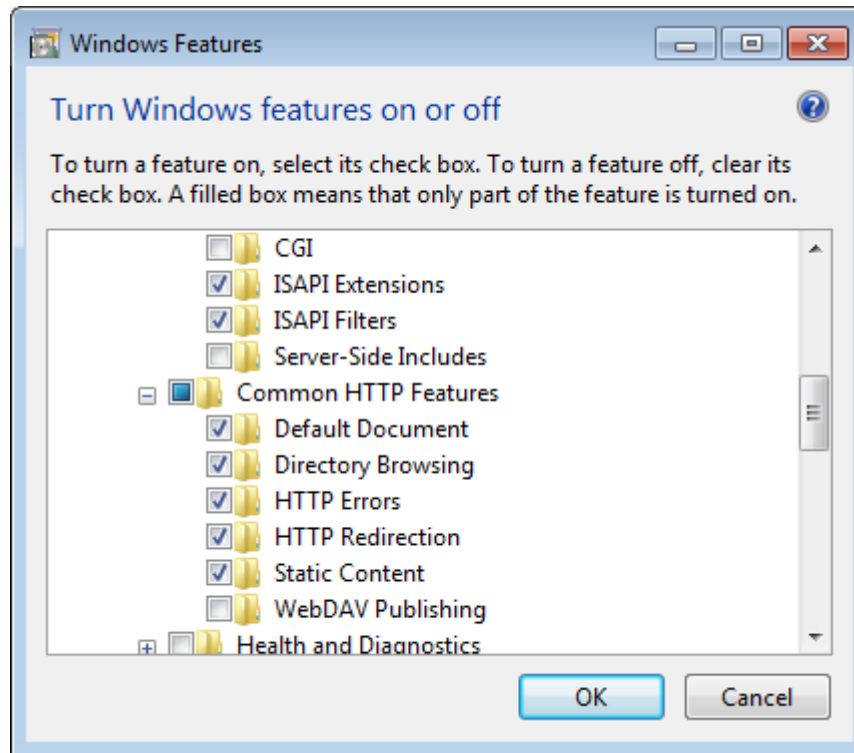
1. Under Web Management Tools, check that IIS 6 Management Compatibility and IIS Management Console are selected



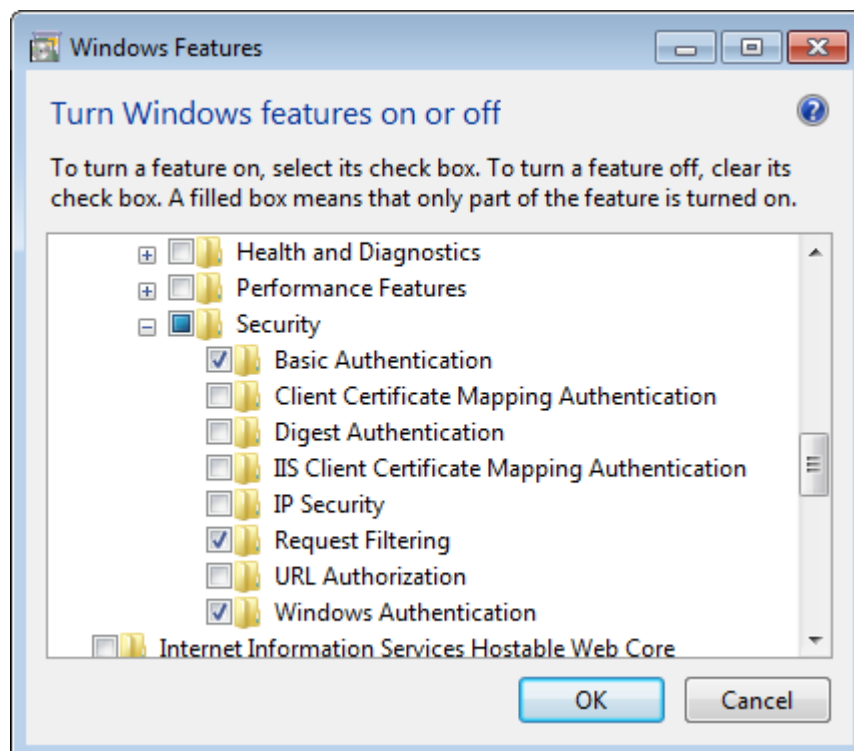
2. Under World Wide Web Services, ensure that .Net Extensibility, Asp.Net are selected.



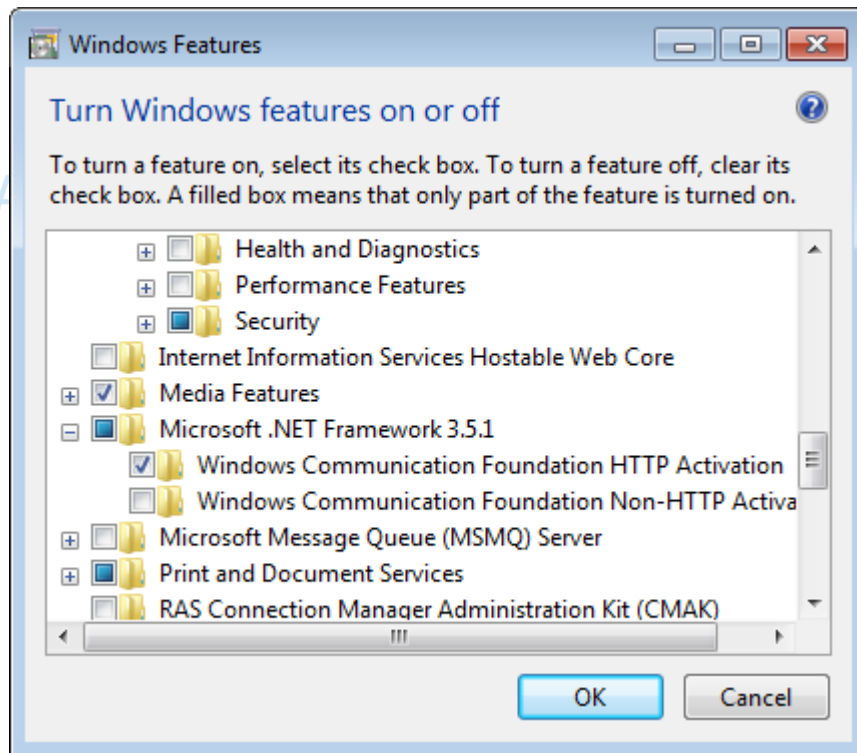
3. Under Common HTTP Features, ensure that Default Document, Directory Browsing, HTTP Errors, HTTP Redirection and Static Content are selected. Ensure that WebDAV Publishing is not selected (this is a common cause of 504 errors).



4. Under Security Ensure that Basic Authentication and Windows Authentication are selected.



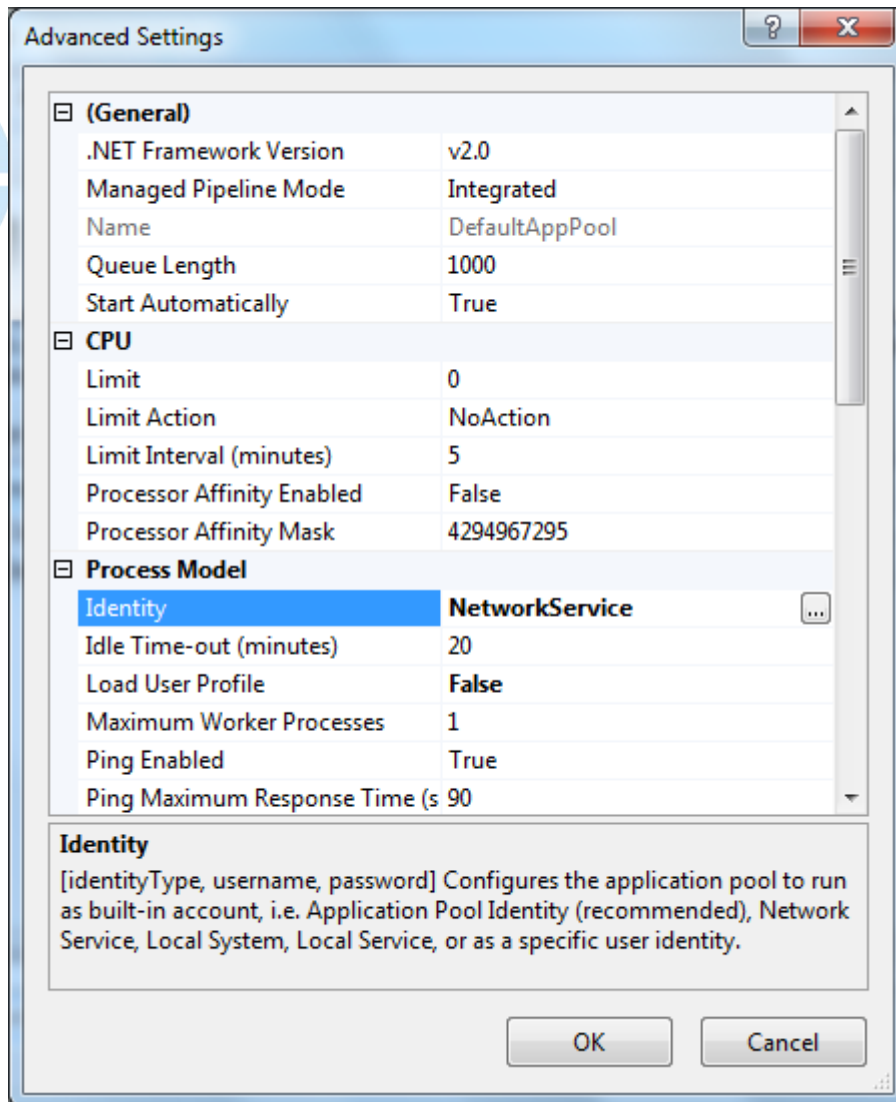
5. Under Microsoft.NET Framework 3.5.1 check that you have selected Windows Communication Foundation HTTP Activation.



Now navigate to Control Panel> Systems and Security>Administrative Tools>IIS Manager> Application pools.

Right click on the DefaultAppPool, and select "Advanced Settings." A Dialog will appear with settings for the application pool, scroll down until you find the Setting for "Identity", if it is not "Network Service" you will need to update the value to be "Network Service".

If you are installing to a 64 bit operating system, and you intend to integrate Enterprise Tester with SparxSystems Enterprise Architect, and wish to be able to import data from Enterprise Architect EAP files - then you will also need to enable support for 32bit applications in the application pool.



Completing the Installation (32 bit Operating Systems)

Once the above steps are complete you are ready to install Enterprise Tester. From the installation file run the .exe file. This file will first install SQL Server Express as your database before installing Enterprise Tester.

Completing the installation (64 bit Operating Systems)

SQL Server Express Database Set up

For 64 bit operating systems, you will need to download and install SQL Server 2008 Express. SQL Server 2008 r2 Express can be downloaded from here:

<https://www.microsoft.com/betaexperience/pd/SQLEXPDBMT64/enus/>

Once downloaded, run the SQL Server Installer and install the product.

A simple guide on installing SQL Server Express 2008 r2, see here:

<http://www.symantec.com/connect/articles/install-and-configure-sql-server-2008-express>

Note: When installing Sql Server 2008, we recommend that you select "mixed mode" for authentication (was opposed to windows only security), selecting mixed mode will cause the installer to prompt you for a password for the "SA" account, keep this password safe as it may be required if you need to recover data from your Sql Server in the future.

Catch Limited may ask for this information when assisting customers who are experiencing problems with Integrated Security and Sql Server.

Then run the .msi (not the .exe) file to install Enterprise Tester. If you have file extensions disabled you can tell the difference by checking the file size, the .MSI file is typically 12 or more megabytes in size, while the .exe file is less than 1 megabyte.