



## Installing TFS 64-bit Client

- Introduction
- Checking if this applies to you
- Installing

### Introduction

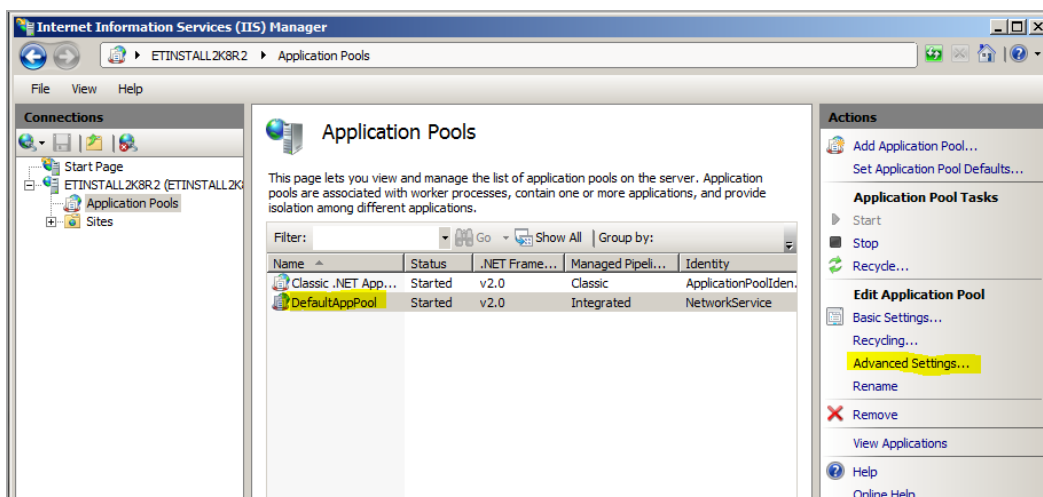
If you are using a 64bit-only application for Enterprise Tester, you will find that the 32bit TFS client installs do not work. To get round this you must install some component from the TFS 2010 server installation DVD/ISO image.

### Checking if this applies to you

This guide only applies if you have your application pool configured for 64-bit only, if not, you should be OK installing the 32-bit TFS client (or if the machine already has say Visual Studio 2010 installed, you may find the files are already there).

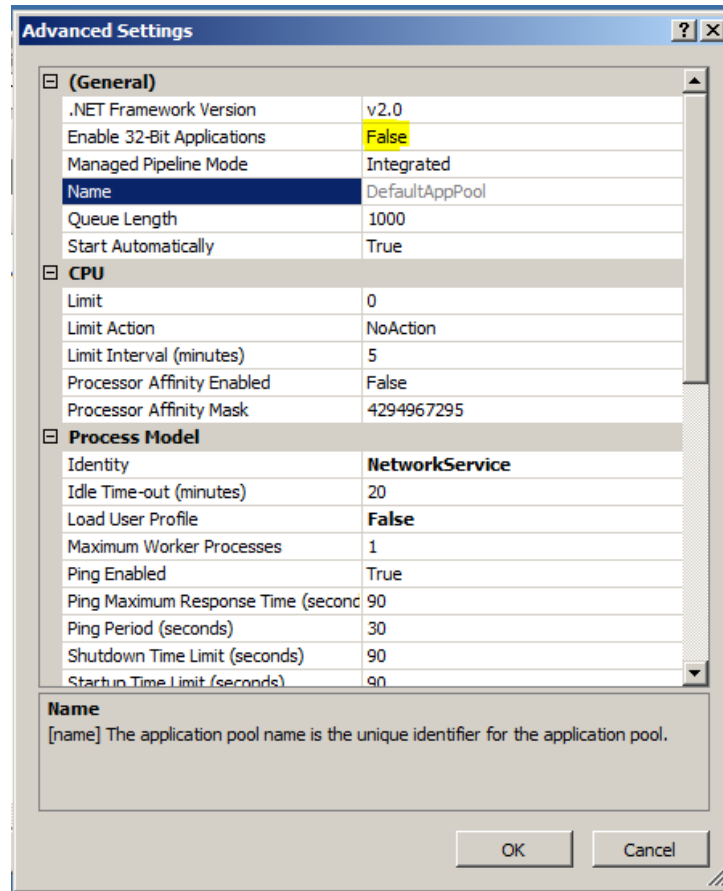
To confirm, launch Start -> Administrative Tools -> Internet Information Services (IIS) Manager.

Expand the application pools node, and select the application pool being used by enterprise tester - it's normally called "Default App Pool".



Once selected, to the right click "Advanced Settings".

If "Enable 32-bit applications" is set to "False" - then you are using a 64-bit application pool.

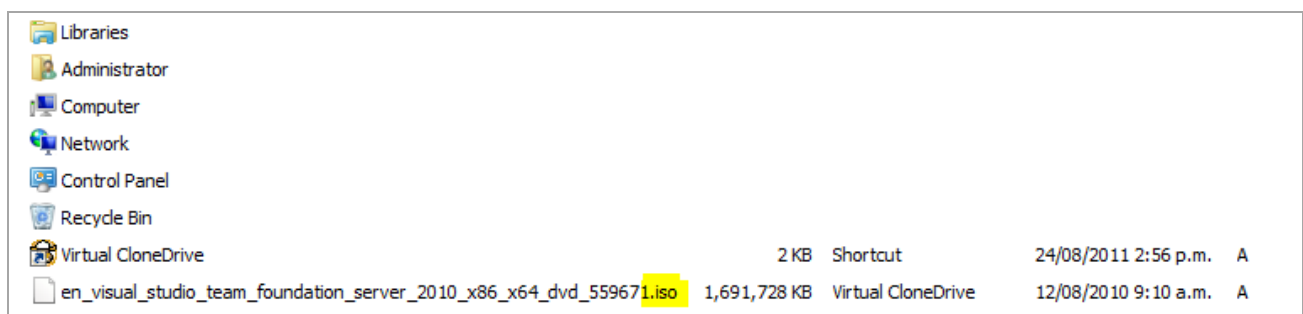


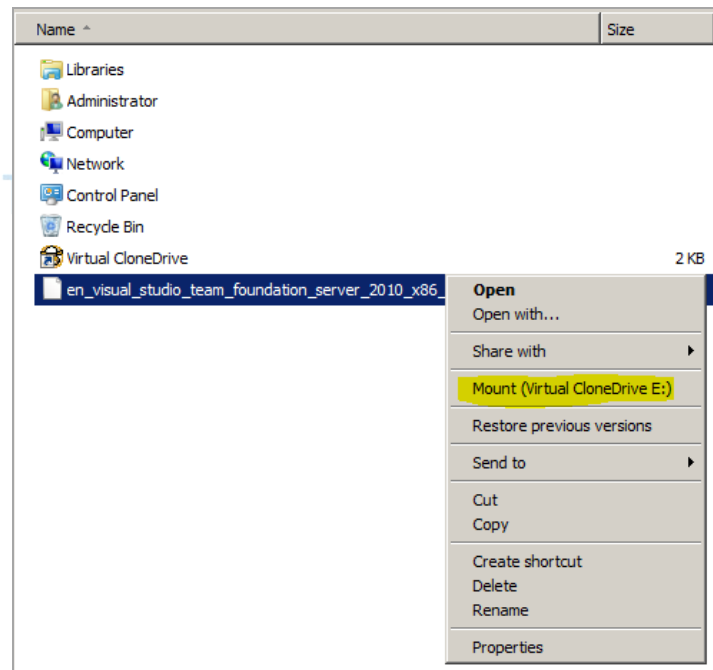
## Installing

TFS 2010 server is distributed either as an ISO image (via an msdn or technet subscription) or on DVD.

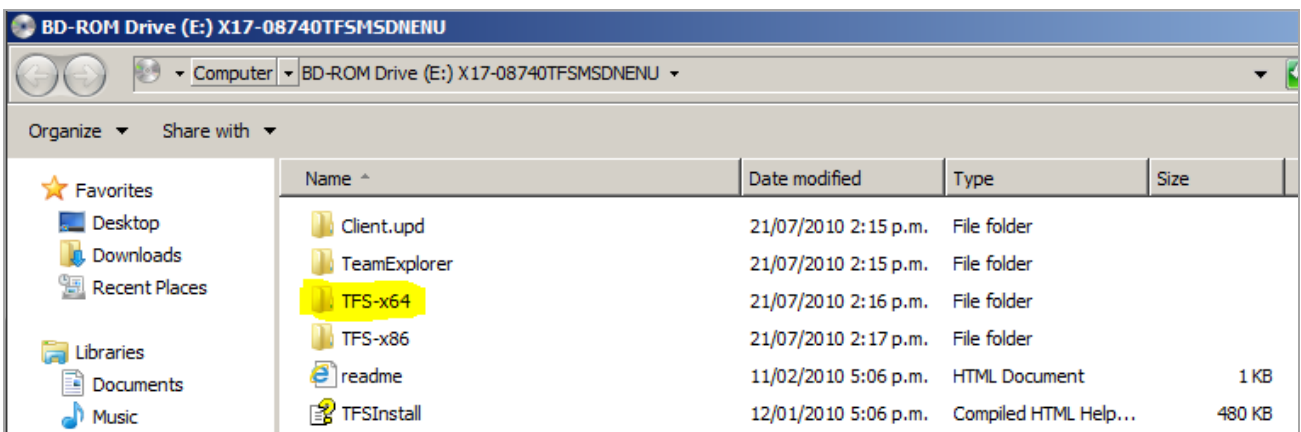
If you have an ISO file - you can either install a tool such as Virtual Clone Drive, to allow mounting the ISO image as a virtual drive, or alternatively if you are hosting Enterprise Tester in a virtual machine, your virtualization administrator should be able to mount the ISO image on the virtual machine for you.

In this case we are going to mount an ISO image using Virtual Clone Drive, and the image file is named "en\_visual\_studio\_team\_foundation\_server\_2010\_x86\_x64\_dvd\_559671.iso" (obtained from the Microsoft site, requires a technet/msdn subscription).

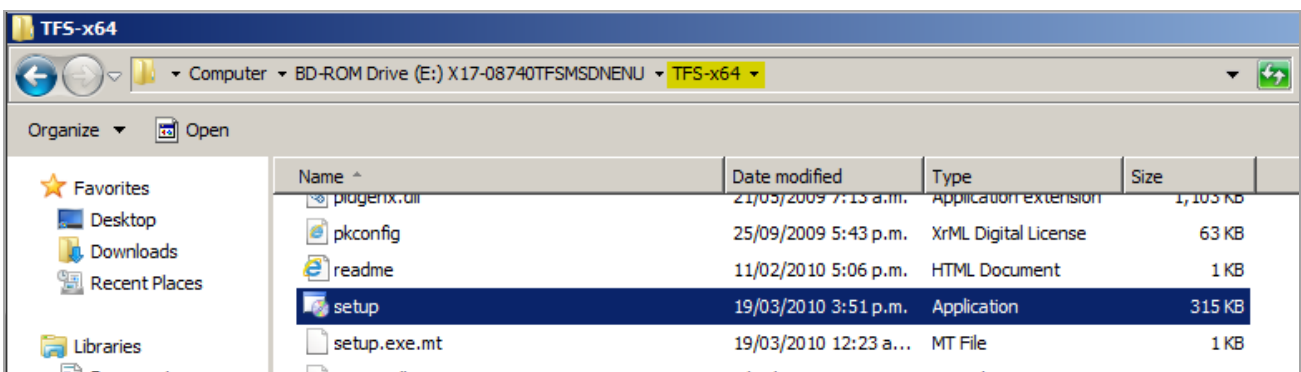




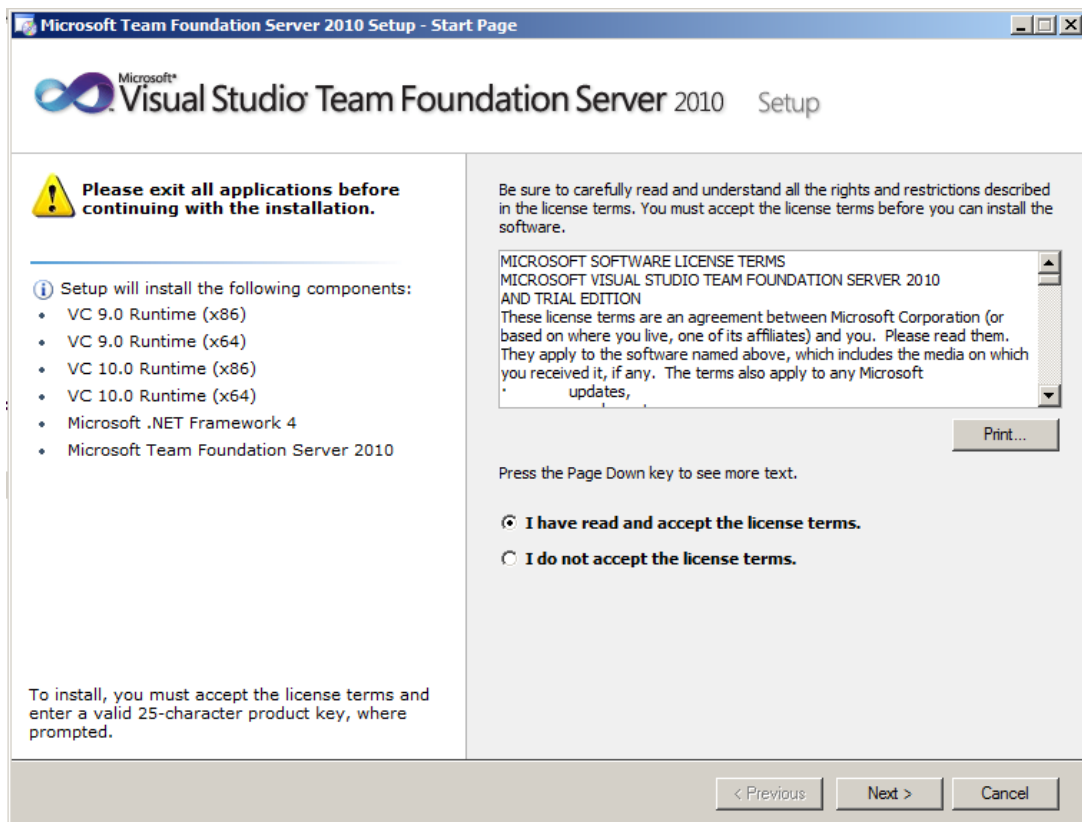
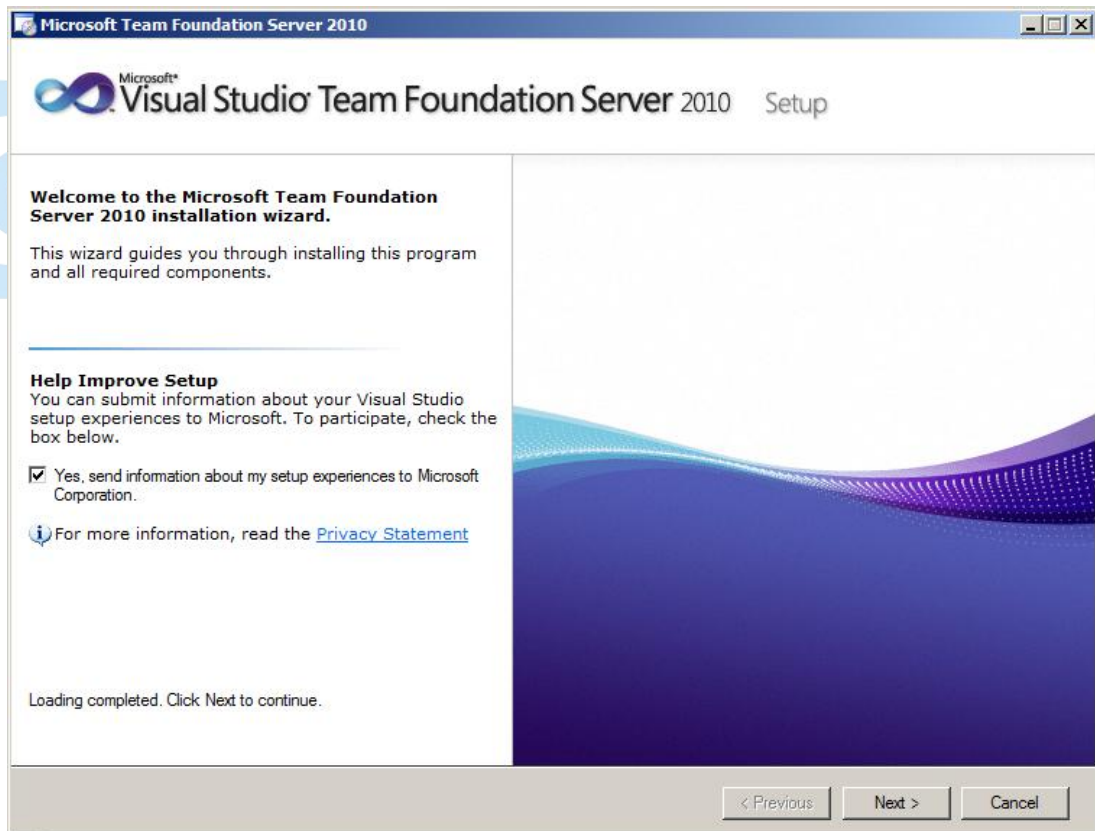
Once mounted, access the installation media:



Then navigate to the folder "TFS-x64" and locate the executable file "setup.exe", and double-click to execute it.



Navigate through the first two steps of the install wizard.



On the third step, select "Team Foundation Components" - this will select everything, then un-tick "Team Foundation Server", "Team Foundation Server Proxy" and "Team Foundation Build Service" - this will just install the necessary components to connect a TFS server, without actually installing TFS server.

Continue to the next step to start installation.

Microsoft Team Foundation Server 2010 Setup - Options Page

Microsoft Visual Studio Team Foundation Server 2010 Setup

Select features to install:

- Team Foundation Components
  - Team Foundation Server
  - Team Foundation Server Proxy
  - Team Foundation Build Service

Feature description:

Installs Team Foundation Build Service, which you can use to automate builds. In most situations, the best practice is to install this feature on a different server from Team Foundation Server.

Feature install path:  
C:\Program Files\Microsoft Team Foundation Server 2010\T... Browse...

Disk space requirements:

Volume	Disk Size	Available	Required	Remaining
C:	59.9 GB	42.8 GB	1.9 GB	40.9 GB

Restore Defaults < Previous Install Cancel

Microsoft Team Foundation Server 2010 Setup - Install Page

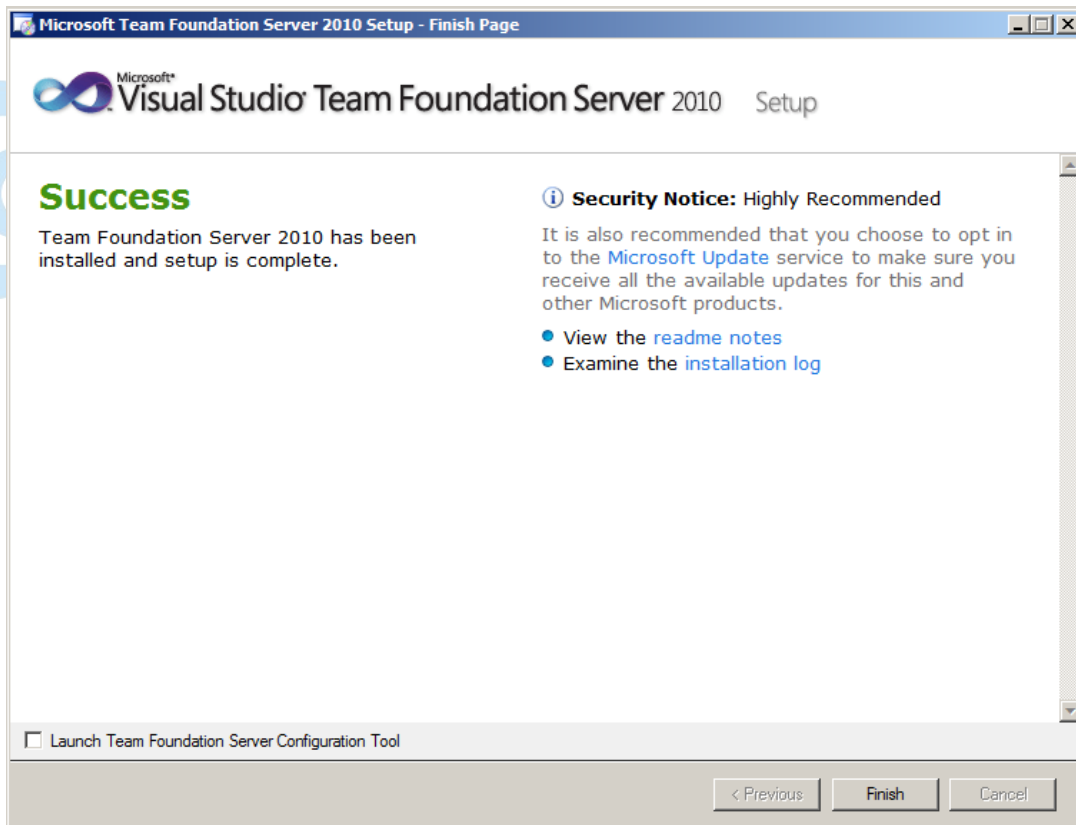
Microsoft Visual Studio Team Foundation Server 2010 Setup

Installing Components:

- VC 9.0 Runtime (x86)
- VC 9.0 Runtime (x64)**
- VC 10.0 Runtime (x86)
- VC 10.0 Runtime (x64)
- Microsoft .NET Framework 4
- .NET Framework 4 Multi-Targeting Pack
- Microsoft Team Foundation Server 2010
- Critical Fix for Team Foundation Server - KB2135068

Installing VC 9.0 Runtime (x64)...

< Previous Next > Cancel



Once installation has completed, you can then create TFS connections on your Enterprise Tester server.